

The University of Iowa History of Medicine Society
invites you to hear:



Russell Currier

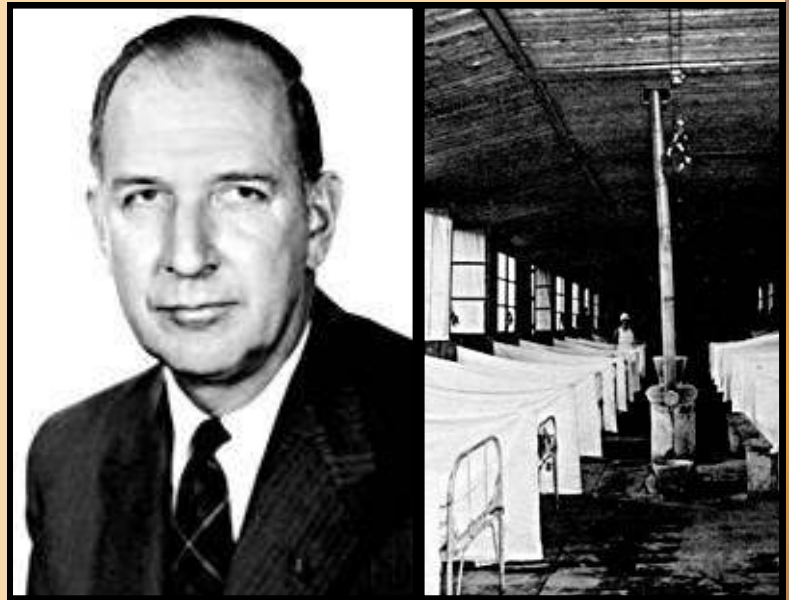
Past President
American Veterinary Medical History Society

Iowa's Richard Edwin Shope MD: His Contributions to Influenza Research and One Medicine/Health

Thursday, January 26, 2017
5:30-6:30

MERF Room 2117
Medical Education and Research
Facility

Richard E. Shope MD (1901-1966) was a pioneer microbiologist who investigated a variety of human and animal diseases. Dr. Shope joined the laboratories of the Rockefeller Institute at Princeton to work with Dr. Paul Lewis, the discoverer of polio virus. In 1928, he left tuberculosis research to investigate hog cholera where he observed his first outbreak of swine influenza. Later he isolated the virus from pigs and its co-pathogen "Haemophilus influenzae suis", and postulated that the swine virus was related to the human 1918 pandemic virus.



If you are a person with a disability requiring an accommodation in order to participate in this program, please contact Donna Hirst, Hardin Library for the Health Sciences (donna-hirst@uiowa.edu), 335-9154. The UI History of Medicine Society website is located at: <http://hosted.lib.uiowa.edu/histmed/>