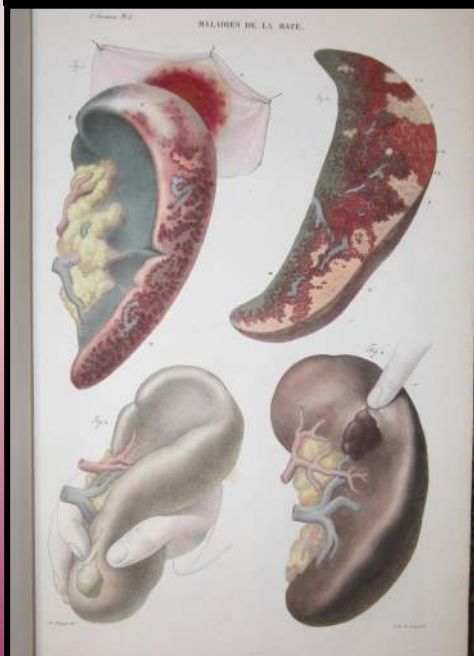
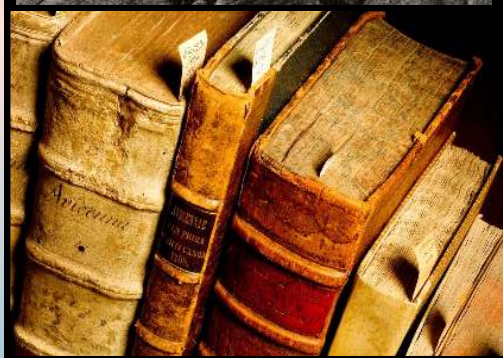


Notes from the
John Martin Rare Book Room
April, 2017

JEAN CRUVEILHIER (1791-1874). *Anatomie pathologique du corps humain*. 2 vols. and atlas. Paris: J.-B. Baillière, 1829-1842.



In the nineteenth century pathology came into its own, being based for the first time on increasingly accurate knowledge of pathological anatomy. Cruveilhier was the first occupant of the newly established chair of pathology at the University of Paris. In his day he was the leader, and he was the first to give an adequate description of disseminated sclerosis and of progressive muscular atrophy. He also described and named, for the first time, hypertrophic pyloric stenosis and ulceration of the stomach due to hyperacidity. His system of pathology, which erroneously taught that "phlebitis dominates all pathology," was permanently discredited by Virchow's later work. This atlas contains some of the finest illustrations of gross pathology ever made. They are colored lithographs, done by the anatomical illustrator, Antoine Chazal.



Hardin Library for the Health Sciences
Room 446
University of Iowa
Iowa City, IA 52242
319/335-9154
donna-hirst@uiowa.edu
<http://www.lib.uiowa.edu/hardin/rbr/>

 THE UNIVERSITY OF IOWA LIBRARIES